

# What Are Sewable Electronics?

Sewable electronics combine traditional craft processes (sewing, fashion design, and textile design) with electrical engineering, computer science, and hardware skills. With sewable electronics, you can create e-textiles (electronic textiles).

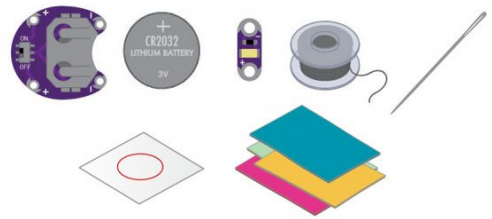
## YOUR FIRST E-TEXTILE PROJECT

### GLOWING PIN

#### MATERIALS

For your e-textile project you need a set of sewable electronic pieces:

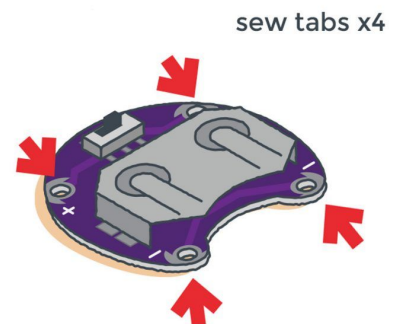
- fabric
- Conductive thread
- A needle
- LEDs
- Coin cell batteries
- Coin cell battery holder



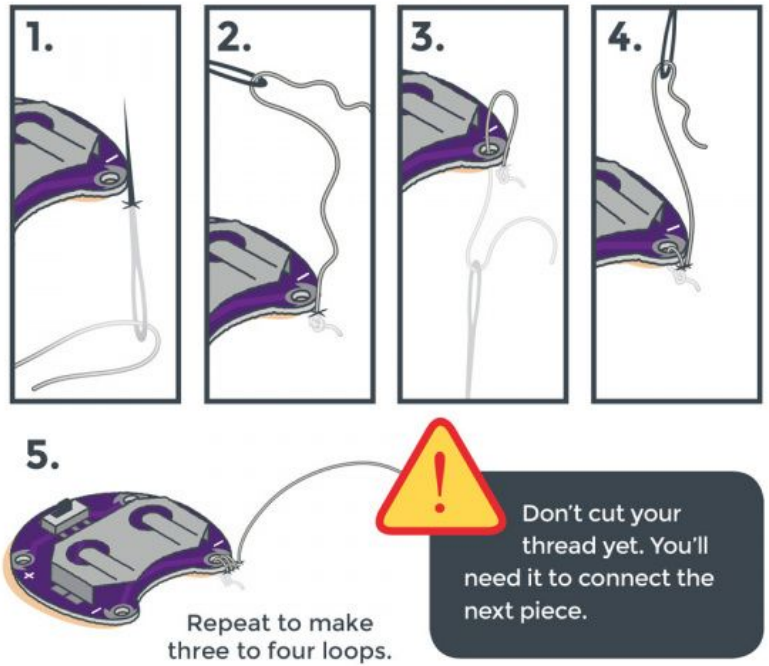
#### LET'S START!!!

Each piece (button battery holder and led) has large holes with conductive silver pads called **sew tabs**.

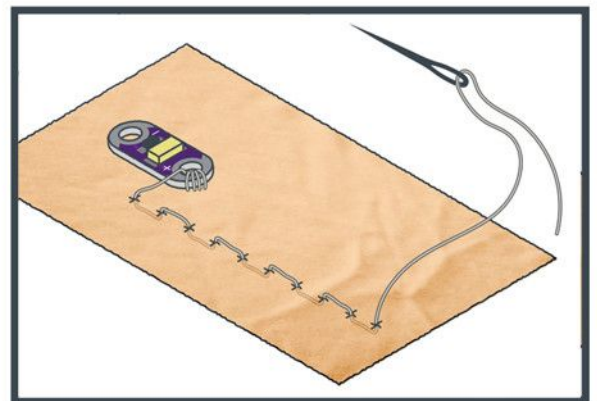
1. Before you begin stitching your circuit, identify the sew tabs you would like to connect



2. Stitch conductive thread around the negative sew tab in your battery holder. Make three to four loops each time you connect your thread around an empty sew tab and pull the thread snug with each pass



3. Make a running stitch and connect pieces together. **PAY ATTENTION!!!** Stitch the positive tab in your battery holder to the positive tab in your LED, the negative tab in your battery holder to the negative tab in your LED or your circuit won't work!!!



4. Now.....turn on the switch....

